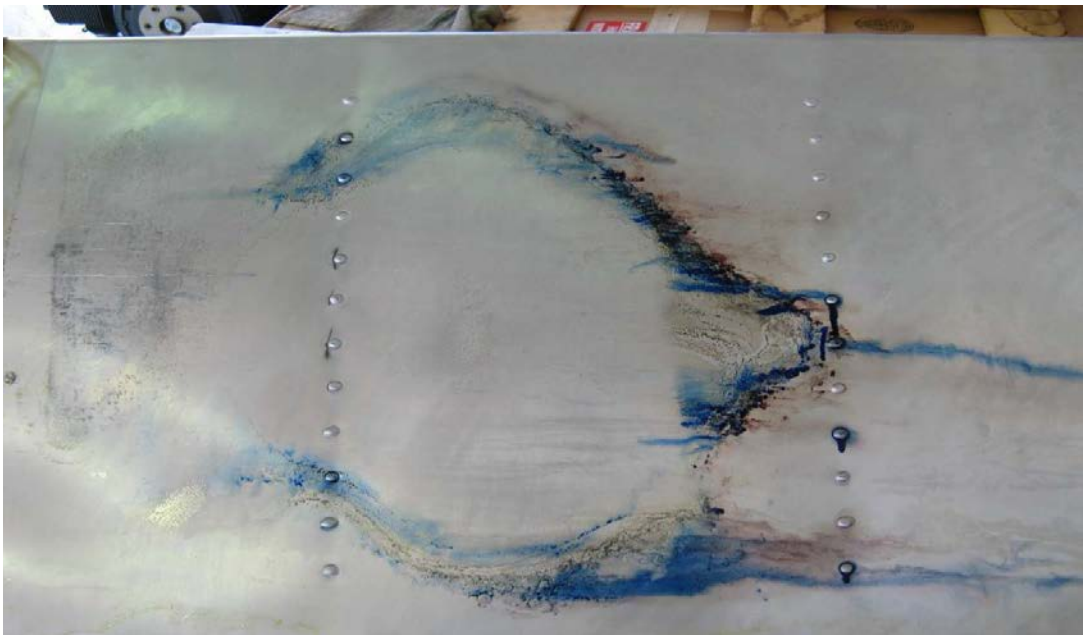


## Diamond, DA42, Cracked Fuel Tanks, ATA 2810

A member of a flight school reported, "During a routine inspection a fuel stain was noted in the left auxiliary tank area. We removed and inspected the tank. There were cracks found at several of the weld points where an internal baffle is welded to the bottom panel of the tank. A new tank (P/N D6028141100) was installed."



Part Total Time: 625.0 Hours